

TR**Q**ME



Company Introduction - 2026

About Us

Trome Group provides various flexible solutions for your product and supply chain.

We work in close contact with you like a team member and offering you most reliable, fastest, smartest services presented by our expert team..

Staff	
Project Manager	2
Purchasing	3
Quality Control	3 (also partner with 3 rd party quality control company for quality control activities outside of Guangdong)
Electronic Engineer	2
Software Engineer	1
Industrial Designer	4
Mechanical Engineer	2

Group Companies

- Trome Dış Ticaret Limited Şirketi (Turkey)
- Trome Smart Solutions HK Limited (Hongkong)

Services

- Project Management
- Product Sourcing (finished or semi products and components)
- Product Design and Prototyping
- Hardware and Software Development
- Electronic Design & Development
- Scale up & Mass production
- Test and Certification
- Quality Assurances
 - Product inspection
 - Manufacturing control
 - Factory audit
- Turnkey Supply Chain Management
- Consulting

Industries

- Aviation & Defense
- Consumer Electronics
- EV
- IOT
- Industrial Drones
- Robotics
- Ceramics
- Retail
- Stationery
- Energy
- Composites
- Medical Industry
- Furniture
- Others

Electronic Components Sourcing



Micro Data Center



Battery Cell



High Speed Camera



RF Isolator



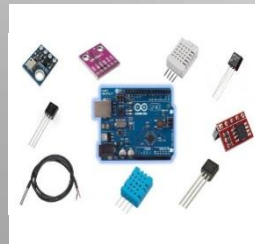
Face Detection
Temperature
Measurement System



Connectors



LCD
Modules/Screens



Sensors



Charging Gun



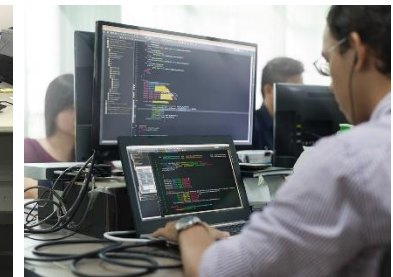
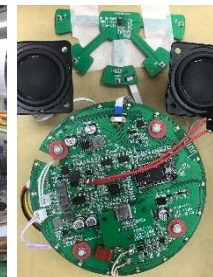
Technical Textile



High Temperature
Wires



Electronic Components



Product Sourcing



TWS Bluetooth Earphone



Stainless Steel
Muscle Scraper



Glass Edging
& Polishing Machine



Glass Temper Machine



Double Wall
Glass



Smart Light Strip



Plexi Glass



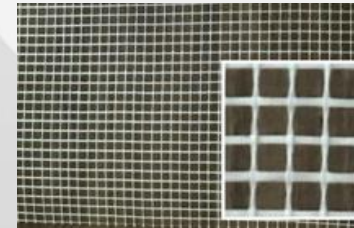
Ceramic Tiles



Porcelain Tiles



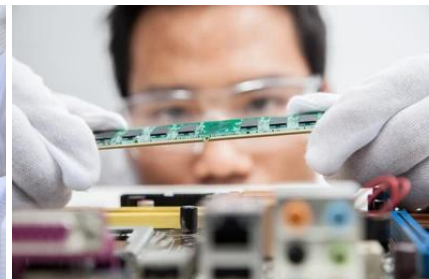
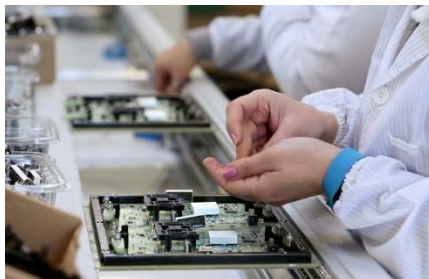
Baby Parking Beds



Fiberglass Mesh



Portable AC



Top Picks From Our Works



WAVEE
Smart Speaker
with Electric Toothbrush

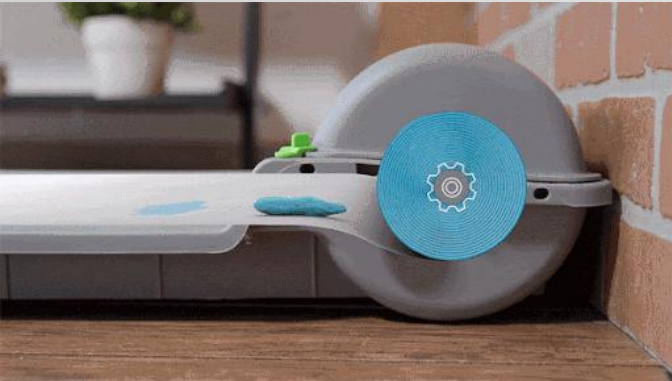


Top Picks From Our Works



FLUX 2
Smart Control Vibration Massage Ball

Top Picks From Our Works



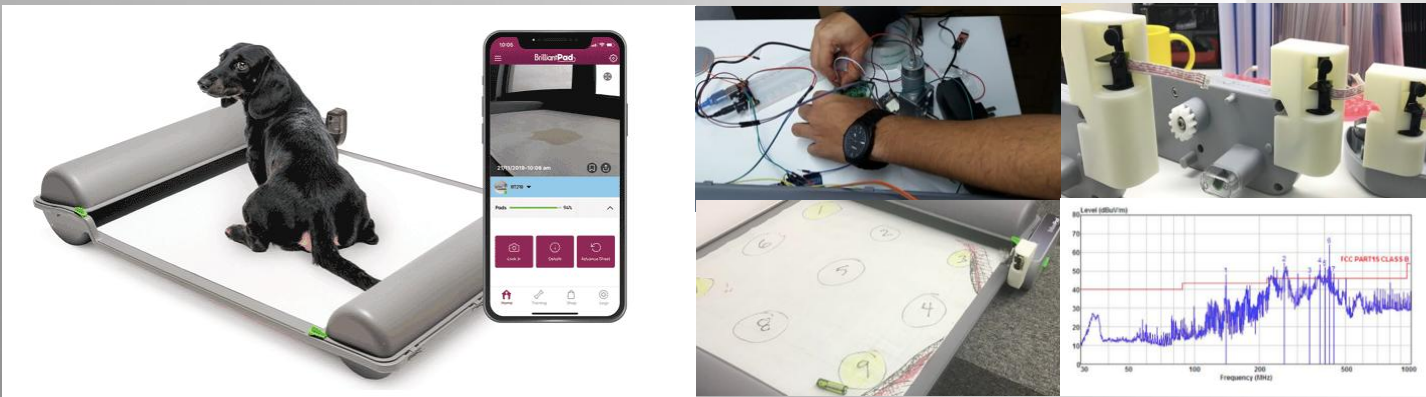
BrilliantPad[™]
Automatic Dog Pad System
Smart Pet Litter



Case Studies

Product Development

Brilliant Pad Smart Self-Cleaning Dog Potty Market: USA



- IR sensor
- Camera
- Artificial Intelligence
- Bluetooth BLE
- Wi-Fi
- Mobile application
- Cloud

Brilliant Pad lets your dog to pee or poo on its pad while at home and wraps the pad automatically. You can receive notification on your phone, monitor the pad status, health level of pee/poo, wrap the pad, schedule events and track the history of events at any time. The pad wraps the pee and poo tightly and doesn't let any bad smell to go out. In this project, electronic design, embedded software, cloud and app development is done by our expert team.

Project steps: All user conditions and use cases are determined. Upon fixing the required specs, our engineering team started the hardware and software design. From the position of the IR sensor to the angle of the camera, we optimized everything for the best performance. When the mechanical prototype is confirmed, we started the tooling process. While the tooling process was ongoing, we continuously improved the software. So that once the tooling process is completed, we immediately started the certification process. After the certification process is completed, we did a pilot run, a small quantity production before the mass production. Once the production line is optimized for the product, we proceeded with the big quantity mass production. During the pilot and mass production, our teams were on the site all the time to solve any kind of problems, so that we had a smooth production process.

Top Picks From Our Works

Quick & Shine

Profesyonel Ev Temizliđi

Fridge Odor Absorber



Sample Product Inspection Report



PRE-SHIPMENT INSPECTION REPORT

Overall Result:
Pending

Report No.: [REDACTED]

Inspection General Information

Client:	[REDACTED]
Supplier:	[REDACTED]
Manufacturer:	[REDACTED]
Product Description:	Vacuum bottle
PO or PI No.:	2021-1
Client's Item No.:	[REDACTED]
Order Quantities:	10500 Pieces
Shipment Quantities:	10500 Pieces
Inspection Quantities:	10500 Pieces
Inspection Location:	[REDACTED]
Inspection Date:	2021-05-17&18
Service Type:	Pre-shipment Inspection
Inspection Standard:	ISO2859
Level:	II
AQL:	Cr: 0/Ma: 2.5/ Mi: 4.0
Sample Size:	315 Pieces
Approval Sample:	No
Inspector:	Youngman



Inspection Result Summary

	Passed	Pending	Failed	N/A	Remark:
1	✓				
2		✓			2.1
3	✓				
4	✓				
5		✓			5.1, 5.2, 5.3, 5.4
6		✓			6.1
AQL Result: Passed					
	Critical		Major		Minor
AQL:	0		2.5		4.0
Total Defects Found:	0		4		18
Maximum Allowed:	0		14		21
Overall Result:	Pending (Due to beyond Remarks 2.1, 5.1~5.4, 6.1)				

This report reflects the fact as recorded by SPEX at the time and place of inspection. It does not release the manufacturers from their contractual obligations nor prejudice client's right for compensation for any apparent and/or hidden defects not detected during our random inspection or occurring thereafter.

Sample Factory Audit Report

Checkpoint	Document		Score			
	Doc. No	Checked	0	1	2	3
1. Management Responsibility						
<input type="checkbox"/> Management Attitude During Audit						x
<input type="checkbox"/> Organization Chart				x		
<input type="checkbox"/> Education					x	
<input type="checkbox"/> Innovation Capabilities				x		
2. Quality System						
<input type="checkbox"/> Standard Certification(ISO, QS, OHSAS, etc)						x
<input type="checkbox"/> Quality Policy					x	
<input type="checkbox"/> Quality Improvement Program				x		
<input type="checkbox"/> Quality tools (DOE,FMEA,.....)					x	
<input type="checkbox"/> Document Management					x	
<input type="checkbox"/> Record Archiving System					x	
<input type="checkbox"/> Calibration System					x	
<input type="checkbox"/> Flammability Management(UL, Needle Flame, etc)				x		
<input type="checkbox"/> RoHS Control Process						x
3. Design Control						
<input type="checkbox"/> Designing criterias (and check)					x	
<input type="checkbox"/> Designing evaluation:Better reliability? Productability?					x	
<input type="checkbox"/> Production Release and Approval					x	
<input type="checkbox"/> Records of problems					x	
4. Material Storage Management						
<input type="checkbox"/> Storage capability				x		
<input type="checkbox"/> Warehouse conditions (5S)				x		
<input type="checkbox"/> Inventory management				x		
<input type="checkbox"/> FIFO Management					x	
<input type="checkbox"/> Shelf Life/Over shelf life Management					x	
5. Incoming Quality Assurance						
<input type="checkbox"/> Incoming Quality Control Plan						x

Company profile:	Emoka		Comments
Established	2008		In general they have a good volume. The production line was very busy even on Saturday. The business looks very good.
Revenue	Y2017	20M USD	
Shipped QTY	Y2017	1M pcs	But in correlation with the good volume, the facility is not well developed enough. Lack of space in warehouse and production. Semi products, incoming materials and finished products are mixed in many places. Incoming materials are not stocked properly. Rejected goods and accepted goods are together. There is no clear isolation in between. It is easy for operators to make mistake and take the rejected materials to the production line. Some materials didn't have any label, so the quantity, test status, etc. wasn't clear at all.
	Y2018 forecast	5% increase target	
Target market %	USA 20%, Asia (Korea, Japan China, Singapore) 50%, EU 15%		Moreover, in system there is FIFO (first in first out) procedure. But the warehouse is lack of the computer system. Because the warehouse is in a mass, it is difficult to point out which material came in first.
Factory area	7000m2		
Employees	230		
Product range	All kind of massage de		Electronic components are not stored properly. Unpacked PCBs need to be repacked but they didn't. The humidity and temperature of the room was high during the visit and there is nobody taking care of the situation. There is no alarm system, in the event of an emergency, nobody can notice the problem on time and take action.
Facility	PCB manufacturing and tooling is outside.		
Simultaneous Project QTY	10		
Average Project Lead Time	3 months		
R&D Team	ID	2	IQC is lack of testing safety components, batteries, adaptors. They perform basic function test and outlook check. There is no further detailed safety tests. Relying on the suppliers test reports. The adaptors don't have a date code. Batteries usually stay 2 weeks in the warehouse and moved to production.
	SW Eng	2	
	ME Eng	2	
	EE Eng	2	
Massage products experience	2011		ROHS equipment is in R&D room. The calibration is done by a 3rd party company.
Testing Investment	2011		
Reliability Test Equipment:			
Voltage Test	2		PCB components are purchased by Emoka, sent to outside another company for assembly. Then they receive the PCBA and use in the production line. Tooling is also done outside.
Power Meter	3		
Insulation Test	1		
Sensitive Weight Scale	1		

Sample Factory Audit Report

AUDIT RESULTS AND FINAL SCORING	Score
1. Management Responsibility	63
2. Quality System	67
3. Design Control	70
4. Material Storage Management	52
5. Incoming Quality Assurance	46
6. Manufacturing Process	65
7. In-line Proses Control	63
8. Final Quality Assurance	63
9. Finished Product Storage Management	64
10. Customer Service	80
FINAL JUDGEMENT	63

AUDIT RESULTS AND FINAL SCORING



AUDIT RESULTS AND FINAL SCORING	Score
1. Management Responsibility	93
2. Quality System	83
3. Design Control	70
4. Material Storage Management	64
5. Incoming Quality Assurance	60
6. Manufacturing Process	75
7. In-line Proses Control	63
8. Final Quality Assurance	63
9. Finished Product Storage Management	64
10. Customer Service	80
FINAL JUDGEMENT	71

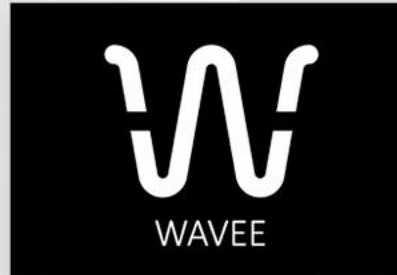
AUDIT RESULTS AND FINAL SCORING



Our Advantages

- Same language
- Same time zone
- Operation in both Turkey and China
- Flexibility
- Technical know-how
- Reliable Business Partnership

References



Contact Us

Trome Smart Solutions Hong Kong Ltd.

Hong Kong Ofis: RM A08, 17/F Billion Plaza 2, 10 Cheung Yue Street, Lai Chi Kok, Kowloon, Hong Kong

Shanghai Office:

Room 2209, Fortune Times Tower,
1438 North Shaanxi Road,
Putuo District, Shanghai, 200060 China

E-Posta: info@trome.hk

Turkey Office

Telefon: +90 5336471029

